

PALAVA TIMES

February 2025



Gateway to the future with Lodha World School

Lodha World School, Casa Bella Gold hosted the second edition of the 'Lodha World School All-India University Fair 2024,' welcoming over 500 attendees, including students, parents and representatives from 30+ prestigious institutions. **Pg 4**

#SmallNumbersBigImpact How Palava City stays cool

A 2023 study by the Lodha Net Zero Urban Accelerator, in collaboration with RMI, a global sustainability think tank, reveals that Palava's maximum land surface temperature is 3°C cooler than nearby Kalyan-Dombivli and 2°C lower than Mumbai. **Pg 6**

Laughter & creativity lit up the Lakeshore Greens Lawns

Imagine moments of hula hooping amidst lush greenery, cuddling with grandparents under fairy-lit tents, marvelling at a whimsical puppet show, unleashing your creativity in the engaging workshops and savouring delectable bites in your backyard! **Pg 9**

Heralding exceptional everyday living!



As the festive season fills the air with joy and celebration, I want to extend my warmest wishes to everyone for a season of happiness and togetherness. Alongside this, we're excited to share Palava City's remarkable milestones that continue to redefine exceptional living.

At Palava, we take pride in nurturing our children's holistic growth through experiential **education** that goes beyond the classroom, nurturing the leaders of tomorrow. Our students recently won the 'Audience Choice' award at the 10th annual 'City as Lab Conference' by B.D. Somani. The 'University Fair 2024' connected over 500 attendees with representatives from 30+ esteemed institutions, opening doors to bright futures. Notably, six Palava students earned a spot among the elite national cohort of 200 participants in the prestigious Lodha Genius Programme with Ashoka University, showcasing the thriving ecosystem that empowers our students to excel.

Sustainability is a cornerstone of life at Palava, meticulously designed on eco-friendly urban principles to promote responsible living. Recognising global challenges like climate change, we have embedded proactive solutions into our urban planning for over 15 years. A 2023 RMI (a globally respected institution focused on transforming energy systems for a clean, zero-carbon future) study highlights that Palava's maximum land surface temperature is 3°C cooler than Kalyan-Dombivli and 2°C cooler than Mumbai.

Palava's Air Quality Index (AQI) stays below 100 for 96% (350 days) of the year, far exceeding Mumbai's 59% (213 days). Additionally, in a region prone to water shortages, Palava ensures a reliable 24/7 supply, supported by ample reserves, 100% recycling, and adherence to National Building Code standards. This holistic approach fosters a healthier, sustainable environment for all residents.

Our **community events** transform daily life into enriching experiences, from Bhagavad Gita sessions for children fostering early wisdom to a recent culinary workshop with MasterChef Pooja Dhingra, which provided a refined, hands-on experience in the art of baking.

To aid our community's **transport** convenience, we have introduced 10 air-conditioned bus shuttles for internal transit, ensuring a more comfortable commuting experience.

Our robust, multi-layered security infrastructure, supported by the participative Security Council, ensures a **safe and secure** environment while adapting to evolving needs for residents' well-being.

Inaugurated in 2015, the **Senior Citizens Foundation** at Palava has grown from a social club into a close-knit family. Their energy and optimism are contagious inspiring residents across generations. Offering cultural performances, personal development sessions, and community initiatives, it currently has over 500 members and aims to reach 1,000.

The **Incredible Women of Palava Group**, started by six members, has grown to over 150 in just a few months, fostering a close-knit community and supporting personal growth.

Palava's new **Gurudwara**, inaugurated on Guru Purab, adds to the city's spiritual and cultural diversity. In just three days, it welcomed over 3,000 devotees, reflecting our commitment to promoting unity and peace.

Under the **Lodha Foundation**, we are working on various initiatives for the well-being of people around Palava in the KDMC region. Look out for the article on Lodha Foundation.

One such initiative, the **Lodha Unnati Programme**, empowers women aged 18 and older to (re)enter the workforce, fostering personal growth and contributing to India's economic landscape. In just four months, over fifty women from Palava and nearby areas have secured employment through the programme.

We're thrilled to have opened a pet park, a safe and engaging space for pets to roam freely within secure boundaries.

PCMA, Palava's governing body, is evolving with a new office, experienced professionals, and a Resident Council, further enhancing its ability to support our community's daily life.

And let's not forget the soon-to-be-completed **Airoli-Katai Freeway**! This game changer will significantly reduce travel times. Similar infrastructure developments, such as the completion of the Eastern Freeway, Santacruz - Chembur Link Road, Metro Line 1, and the TDLR, have historically driven significant price appreciation in surrounding areas, with increases typically ranging from 25% to 35%. This freeway is poised to have a similar positive impact on Palava's real estate market.

Together, these efforts reflect our steadfast dedication to enhancing life at Palava, creating a community that thrives on progress, inclusivity and environmental stewardship.

Here's to a bright future filled with happy times!

Shaishav Dharia

Palava's Air Quality Index (AQI) falls below 100 for 350 days (96%) of the year, significantly outperforming Mumbai, which has only 213 days of ideal AQI levels (59% of the time) as per 2023 data.

Gateway to the future with Lodha World School



Lodha World School, Casa Bella Gold hosted the second edition of the 'Lodha World School All-India University Fair 2024,' welcoming over 500 attendees, including students, parents and representatives from 30+ prestigious institutions such as BITS Law School Mumbai, IAQS, MET Mumbai Education Trust, Shiv Nadar University, American University of Antigua, Strate School of Design, World School of Sports, Amity University, Plaksha University, Symbiosis School for Liberal Arts and Tata Institute of Social Sciences, among others.

Renowned university representatives delivered insightful presentations and seminars on emerging academic trends, innovative admission strategies and future career opportunities. Highlights included 'Skills of the Future: Transcending Education in 2030' by O.P. Jindal University, 'AI and Career' by Alliance University, 'SOP Writing' by Russell Square International College, and 'New Career Opportunities' by Vijaybhoomi University.

The fair offered students and parents a chance to engage with universities, aiding informed decisions about higher education. Its success reflected the collaborative efforts of Lodha World School, staff, and universities. The school remains committed to enhancing career counselling, university prep workshops, and mentorship programs to support academic and professional growth.

Students triumph at the prestigious 'City as Lab' conference



Lodha World School, Casa Bella Gold recently celebrated a significant achievement at the 10th annual 'City as Lab Conference,' hosted by B.D. Somani School. Grade 10 students Pranavi Kulkarni, Saanim Setia and Aradhya Shukla, along with Grade 9 students Niharika Singh, Suryanshu Shah and Akshara Biradar, won the 'Audience Choice' award for their field study, The Kaleidoscope Effect. Mentored by teacher Akshay Banderkar, the study highlighted the decline in butterfly populations due to deforestation and industrial pollution, offering actionable solutions.

In conversation with the student cohort, Saanim Setia shared insights into their award-winning study, which began in Mothi-Desaigaon, using butterfly populations as ecological indicators. "Our goal was to explore correlations between butterfly species, their host and nectar plants, and the factors influencing their presence," she explained. The team validated their findings through extensive field visits and ecological surveys.

Akshara Biradar enthusiastically recalled their experiences, saying, "Witnessing the diverse

butterflies, like the 'Striped Tiger' and 'Lime Butterfly,' was a joy."

Adding to this success, Grade 8 students Anay Agarwal, Anandita Vashisht, Manmay Vichare, Rajanya Choudhury, Rithwik Singh, and Srishti Sinha presented 'Emphatically Yours,' a study highlighting empathy as a cornerstone of effective learning in schools.

These achievements reaffirm Lodha World School's commitment to fostering curiosity, critical thinking and leadership in its students.



#SmallNumbersBigImpact How Palava City stays cool

As global temperatures rise, urban areas face increasingly severe challenges from climate change. Driven by greenhouse gas emissions and deforestation, global warming has led to significant disruptions worldwide. In 2022, global temperatures were 0.86°C above the 20th-century average—a seemingly small shift with profound effects on ecosystems and urban environments.

With over 40% of carbon emissions originating from the built environment, real estate and urban development must play a pivotal role in combating climate change. Palava City stands as a testament to this responsibility, embedding sustainability into its very foundation rather than treating it as an afterthought.

A 2023 study by the Lodha Net Zero Urban Accelerator, in collaboration with RMI, a global

sustainability think tank, reveals Palava's climate resilience. The city's maximum land surface temperature is 3°C cooler than Kalyan-Dombivli and 2°C lower than Mumbai. Even more striking, Palava has reduced its land surface temperature by 7°C between 2008 and 2023 through meticulous planning and sustainable strategies.

Key Initiatives Driving Palava's Success:

Urban Design and Layout: Palava's layout optimises natural ventilation and minimises heat retention. Strategically placed towers, shaded courtyards, and carefully oriented buildings enhance airflow and reduce heat absorption, ensuring comfortable outdoor spaces.

Reflective Materials and Paint: High Solar Reflective Index (SRI) materials on rooftops and facades significantly lower heat gain,

reducing dependence on artificial cooling and conserving energy.

Expansive Greens: With over 32,000 trees spanning 200 species, Palava's green cover not only enhances aesthetics but also serves as a natural cooling mechanism, mitigating the effects of heat-absorbing surfaces like asphalt and concrete.

Home to over 200,000 residents, Palava functions as a 'living laboratory', continually refining its eco-friendly practices. Its forward-thinking approach not only improves the quality of life but also establishes a benchmark for urban resilience. Palava demonstrates that cities can thrive while addressing the urgent challenges of a warming world, offering a blueprint for sustainable living.

Essence of a 24/7 Hydrated City

What helps Palava stay head & shoulders above everyone else in the KDMC region to ensure a 24/7, 365-day water supply? Palava is more than just a city - it is a model of sustainable urban living, balancing modern conveniences with ecological responsibility. Palava City ensures a 24/7 water supply through its eco-friendly design and comprehensive water management strategy. While the Kalyan-Dombivli region has faced water shortages, Palava guarantees consistent access, with substantial reserves for emergencies.

How has Palava achieved 24/7 water availability?

The Palava City Management Association's strategy includes supply diversity and

resilience. A general water reservoir serves as a backup during MIDC disruptions, ensuring uninterrupted access. The city also has a robust emergency storage system in place.

How is water recycling executed at Palava? Palava uses Sewage Treatment Plants (STPs) to recycle water from kitchens and bathrooms. This treated water is repurposed for non-potable uses like irrigation and flushing, reducing freshwater consumption. Landscaping and green initiatives are fully supported by 100% recycled water.

In lieu of severe water shortages, what are our contingency plans? Palava's 2,000 kilo litres per day-capacity

Water Treatment Plant ensures water supply during MIDC shutdowns. A dedicated team handles efficient water allocation, infrastructure maintenance, and rapid response to any issues.

What additional measures has Palava implemented to demonstrate its commitment to water conservation while ensuring a 24/7 water supply? Palava uses smart water metres, high-efficiency fixtures, and groundwater recharge systems to optimise water usage and support the regional ecosystem. The city's water usage aligns with National Building Code norms, ensuring sustainability without compromising the 24/7 water supply unlike most of the other areas in Mumbai.





A dessert soir ee with the Macaron Queen

Palava hosted an exclusive dessert soir ee for residents of Lodha Serenity, Trinity, and Crown, featuring Pooja Dhingra, India's Macaron Queen. The evening, held at the Lakeshore Greens Clubhouse, celebrated culinary excellence and her exceptional, inspiring journey. Pooja, a former MasterChef India judge, warmly welcomed guests and shared her journey and secret recipes, turning simple ingredients into exquisite creations. Residents had the unique opportunity to bake alongside her, crafting delicious treats under her expert guidance.

The event concluded with a lavish high tea presented by Saint Amand. Guests were gifted a curated box of goodies from Le 15 Patisserie and a signed copy of Pooja's book, 'Coming Home.'

Resident Sneha shared, "The masterclass was inspiring, making us feel privileged to experience Pooja's culinary world." Post the event, Le15 cookies were available at the Lakeshore Clubhouse Caf e.

Unveiling the timeless wisdom of Bhagavad Gita

The Bhagavad Gita teaches, "Do your best, and don't worry about the rest," a lesson especially valuable for children in today's world of instant gratification.

At Palava, youth have the unique opportunity to embrace this wisdom early in life. Children gather regularly at Lakeshore Club for sessions on the Gita, led by ISKCON gurus who share its teachings through engaging stories and personal anecdotes.

Resident Abhishek Gupta explains, "Young minds are impressionable and it's their actions that will shape their future."

For example, Aryan, an 8-year-old chess player, learned to control negative thoughts after losing a match, inspired by Gita's message: "For one who has conquered the mind, the mind is the best of friends." Though he didn't win, Aryan's new mindset made him more resilient.

These sessions help children grow into thoughtful, well-rounded individuals, starting their lifelong journey of self-discovery.



Laughter & creativity lit up the Lakeshore Green Lawns



Imagine carefree moments of hula hooping amidst lush greenery, cuddling with grandparents under fairy-lit tents, marvelling at a whimsical puppet show, unleashing your creativity in the engaging workshops and savouring delectable bites in your backyard!

It brought the much-awaited 'Palava Kids' Fest' to life, offering a vibrant experience for all at Lakeshore Greens. The lush, green lawns provided a beautiful setting where both children and adults could reconnect with their playful spirit.

Highlights included a 'Kulhad' painting workshop, the 'Masterchef Corner' where junior chefs created delicious treats and a live 'Charlie Chaplin' performance. Guests also enjoyed games like bull's-eye aiming and an obstacle course, while families bonded over percussion lessons and graffiti art.

Palava entrepreneurs added to the charm with gourmet snacks, curated fashion and unique art merchandise. Resident Kavita Verma, a mother of two, summed up the evening, saying, "The event was a celebration of our exceptional community spirit."



Lodha Foundation drives impactful change

At Lodha, we are dedicated to creating a lasting positive impact on both the environment and society. Through the Lodha Foundation, we focus on transformative initiatives in education, women's empowerment, and sustainable urbanisation.

A major milestone is the recent transfer of ₹20,000 crores (\$2.5 billion) in shareholding from Macrotech Developers Ltd. to the Lodha Foundation, significantly strengthening our mission.

Education:

The Lodha Genius Programme, in collaboration with Ashoka University, offers a fully funded, 4-week summer session where outstanding students learn from experts at institutions like CERN, IIT, Harvard, and Stanford. This year, six students from Palava were selected among 200 of the brightest minds, showcasing the programme's ability to develop future visionary leaders by enhancing their academic knowledge and leadership potential.

Women's Empowerment:

The Unnati Programme empowers women to re-enter the workforce through career counselling, skill-building workshops, and employer networks. Over 50 women from Palava and surrounding areas have secured flexible jobs, enabling them to contribute meaningfully to their families and communities.

To enrol with Unnati, visit: <https://www.projectunnati.in/enroll.php> or contact +91 86556 45778.

Sustainable Urbanisation:

The Lodha Foundation is committed to a harmonious balance with nature. Recent efforts

include cleaning the water body near Lakeside Park, owned by the Grampanchayat, to maintain hygiene and tranquility.

To enhance community mobility, bus stops and rickshaw stands have been constructed at key locations such as Football Turf and Gate 4.

In partnership with Rocky Mountain Institute (USA), we have also introduced the Lodha Net Zero Urban Accelerator, with a \$500 million investment aimed at achieving net-zero carbon emissions in India's real estate sector by 2035. Palava City serves as a 'live laboratory' for these innovative sustainability solutions.

In response to a heartfelt request from our Senior Citizens Foundation Group, and with all approvals in place, a crematorium facility offering both traditional and electric cremation options will be launched in Palava by March 2025.

Through these impactful initiatives, the Lodha Foundation remains steadfast in its commitment to shaping a better future for people and the planet.



Safeguarding your sanctuary

Palava is deeply committed to ensuring a safe and secure environment while delivering an exceptional experience every day. With a robust multi-layered security infrastructure and active resident participation through initiatives like the Security Council, we continually evolve our safety measures to meet modern needs.

We spoke with Major Salil Shinde of the Palava City Management Association to understand the advancements in security.

Over the past decade, Palava has transformed its security landscape. Can you share the journey?

Initially reliant on traditional methods, Palava has embraced a proactive, tech-enabled approach. Key advancements include Smart Surveillance Systems for real-time threat

detection, 911 integration for rapid responses, biometric-based automated access control, and Speed Monitoring Devices for traffic management. These efforts are coordinated through a Centralised Command Centre that ensures round-the-clock vigilance.

How important is human intervention alongside these technologies?

While technology greatly enhances efficiency, the human element remains irreplaceable. Trained personnel provide critical intuition, empathy, and situational judgment that no algorithm can replicate. They interpret complex scenarios, respond to crises, and build trust within the community. This balance between cutting-edge technology and skilled human intervention is what creates a truly secure environment.

How do you cater to different age groups and spaces in Palava?

Our security measures are tailored to address the unique needs of various groups and spaces. Schools are equipped with safety drills, commercial hubs have robust crowd management protocols, seniors benefit from increased patrols, and family zones are monitored with motorised patrols.

What is the vision for the future of security in Palava?

Our vision is to establish a fully integrated security ecosystem that seamlessly combines advanced technology with community collaboration, ensuring a safe and harmonious living experience for all.

Celebrating life's golden years: Palava's senior citizens



As J.K. Goyal, a passionate member of Palava's Senior Citizens Foundation, puts it, "The longer I live, the more beautiful life becomes." This sentiment resonates deeply within the foundation, which has transformed from a club into a close-knit family since its inception in October 2015 by Shri Mangal Prabhat Lodha.

With over 500 members, the foundation aims to grow to 1,000. It brings together seniors from various Palava neighbourhoods, including Casa Bella Gold, Casa Bella, Golf Link Wing, Rio, Lakeshore Green and Downtown.

More than a social club, the foundation celebrates its members' wisdom and vitality, offering a variety of events year-round—from CSR initiatives like planting Rudraksha trees to medical camps, festivals, cultural performances and personal development sessions such as yoga workshops. The foundation also honours the achievements of younger generations, motivating them with accolades to strive for success.

A highlight is the Annual Day, where members and families enjoy an evening of entertainment

and fine dining. Mohanlal Dhanrale, a member shares, "I've always loved to travel and now I have a new family to share this passion with." The foundation arranges travel experiences, from day trips to international explorations in the Middle East and Sri Lanka, creating lasting memories.

Through these activities, the foundation encourages members to embrace life, creating a ripple effect of positive change across generations in the city.

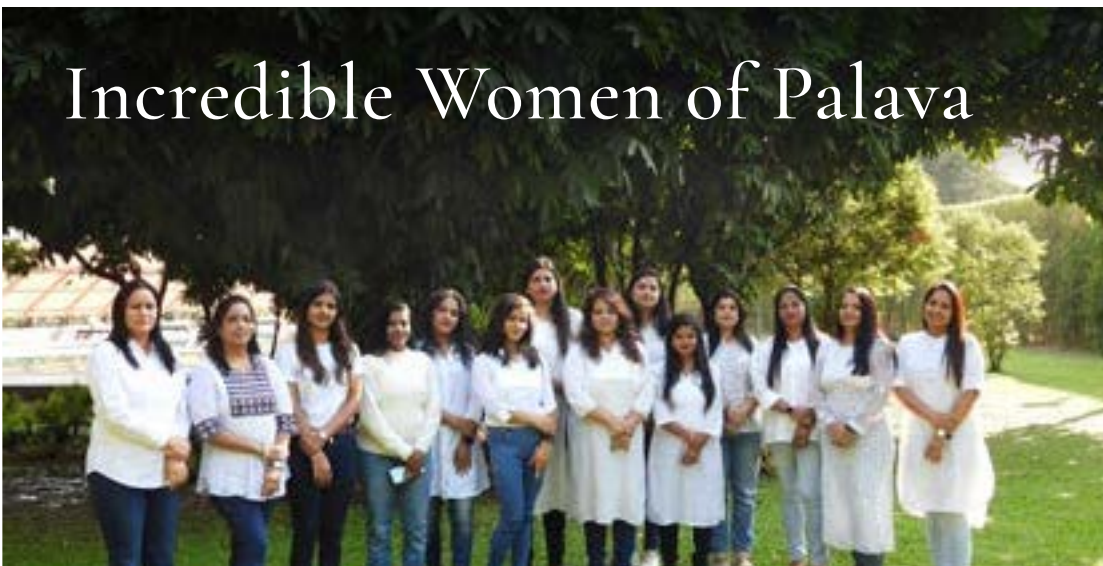


Transforming women's safety with Krav Maga

The Bengali Foundation of Palava recently hosted a self-defence workshop led by Krav Maga Global at the Lakeshore Greens Clubhouse on September 15th. The event, designed for women and girls aged 11 and above, provided practical techniques to handle real-world threats. A Level 2 Krav Maga certified instructor, with experience

in training organisations such as Infosys, DRDO and the US Consulate, led the session. Participants learned essential defensive strategies, assertiveness and swift reactions under pressure. The workshop commenced with an introduction to the fundamental principles of Krav Maga, a self-defence system developed for the military in Israel, which

focuses on real-world situations and efficient counter-attacks. The event was praised as both empowering and essential. This collaboration between the Bengali Foundation and Krav Maga Global has set a new standard for self-defence, leaving a lasting impact on the community. Thank you, Bengali Foundation, Palava, for this remarkable initiative.



Incredible Women of Palava

A recent standout effort by the women of Palava is the creation of the Incredible Women of Palava Group, an initiative aimed at building a strong and enriching women's network here. What began as a small gathering of just six founding members has quickly grown into a vibrant group of over 150 in just a few months.

The group has fostered a deep sense of camaraderie and sisterhood, creating a supportive environment where members can share experiences, exchange knowledge, and offer mutual encouragement. Its success is a testament to the power of collective effort, and it continues to thrive as a model of how women can uplift and inspire one another. Kudos to the inspiring women of Palava for their strength, leadership, and unwavering commitment to empowering each other!



Gear up & Game On with Palaso

November and December have been nothing short of exhilarating at Palava, with the highly anticipated Palaso 2024 taking centre stage! The seventh edition of this thrilling event has already seen over 3000 residents of all ages competing in more than 20 indoor and outdoor sports, creating an unforgettable experience filled with adrenaline, fierce competition and true sporting spirit.

The action is being hosted across Palava's world-class sports facilities, including the Olympic Sports Centre at Lakeshore Greens, the Football Turf, and state-of-the-art clubhouses throughout Palava's neighbourhoods. These top-tier venues provide the perfect backdrop for residents to push their limits and showcase their athletic talents.

Palaso 2024 is more than just a competition—it's a celebration of Palava's commitment to promoting a healthier lifestyle while strengthening the spirit of community living, where residents come together, support one another and build lasting connections through shared experience.



A path to the divine, for you

We are thrilled to share that the Gurudwara was officially inaugurated on Gurupurab, November 15th, 2024. The event drew over 3,000 devotees from Palava and nearby areas, marking a joyous occasion of unity and togetherness for the community. With its grand entrance porch, striking gold-painted domes

and intricate architectural details, the Gurudwara is a symbol of devotion and heritage. Inside, the first-floor prayer hall offers a peaceful space for reflection, while the spacious langar hall fosters community connection through shared meals and harmony. Surrounded by lush greenery and thoughtfully

designed landscaping, the Gurudwara exudes a sense of calm and serenity. The naturally ventilated langar hall, with its open arches and ornate balustrades, enhances the experience for all visitors. May this sacred space continue to inspire peace and togetherness for generations to come.





A park for your furry friends to socialise

We are delighted to announce the opening of our new pet park, a welcoming space for pets and their owners. Designed with both functionality and aesthetic appeal, the park offers a harmonious blend of safety, engagement, and comfort.

The thoughtfully planned layout provides plenty of space for pets to roam freely, with secure boundaries. Dedicated play zones cater to different sizes and energy levels, enabling pets

to exercise and interact according to their needs. Agility equipment and obstacle courses add an exciting element, encouraging physical and mental stimulation.

Central to the park's design are shaded seating areas, providing a perfect spot for owners to relax and connect with others, fostering a sense of community. We look forward to welcoming you and your pets to enjoy this fantastic new space!

Palava: The Haven

Home is where the heart is, they say,
And mine is where love shines every day.
After a long day, I return with glee,
At a haven that's crafted to set me free.

I breathe easy, embracing nature's grace,
Sunbeams brighten my home, every single space.
Birds chirp and call, from window sills,
The birds softly chime,
Palava's riverside garden, where elements align.

School mornings, a vibrant start,
Students busy with eager heart.
A swift commute, both short and sweet,
Teachers welcome with energy on beat.

Neighbours gather with laughter and cheer,
In parks and streets, the warmth is clear.
Festivals and events, we celebrate as one,
In Palava's embrace, true connections are spun.

My dream vacation spot, no need to roam,
I experience bliss, in this wonderful home.
The fitness enthusiast in me, beckons me to play,
Table tennis, badminton, swimming, every single day.

Palava, a symphony of structure and grace,
Where cleanliness and charm fill every single space.
Home where dreams and reality entwine,
In this perfect haven, forever mine.



Mrunalee
Borgaonkar
*(Resident,
Lakeshore Greens)*





Hrit Roy
(Student,
The Shri Ram
Universal School)

Waterfront Park, Palava

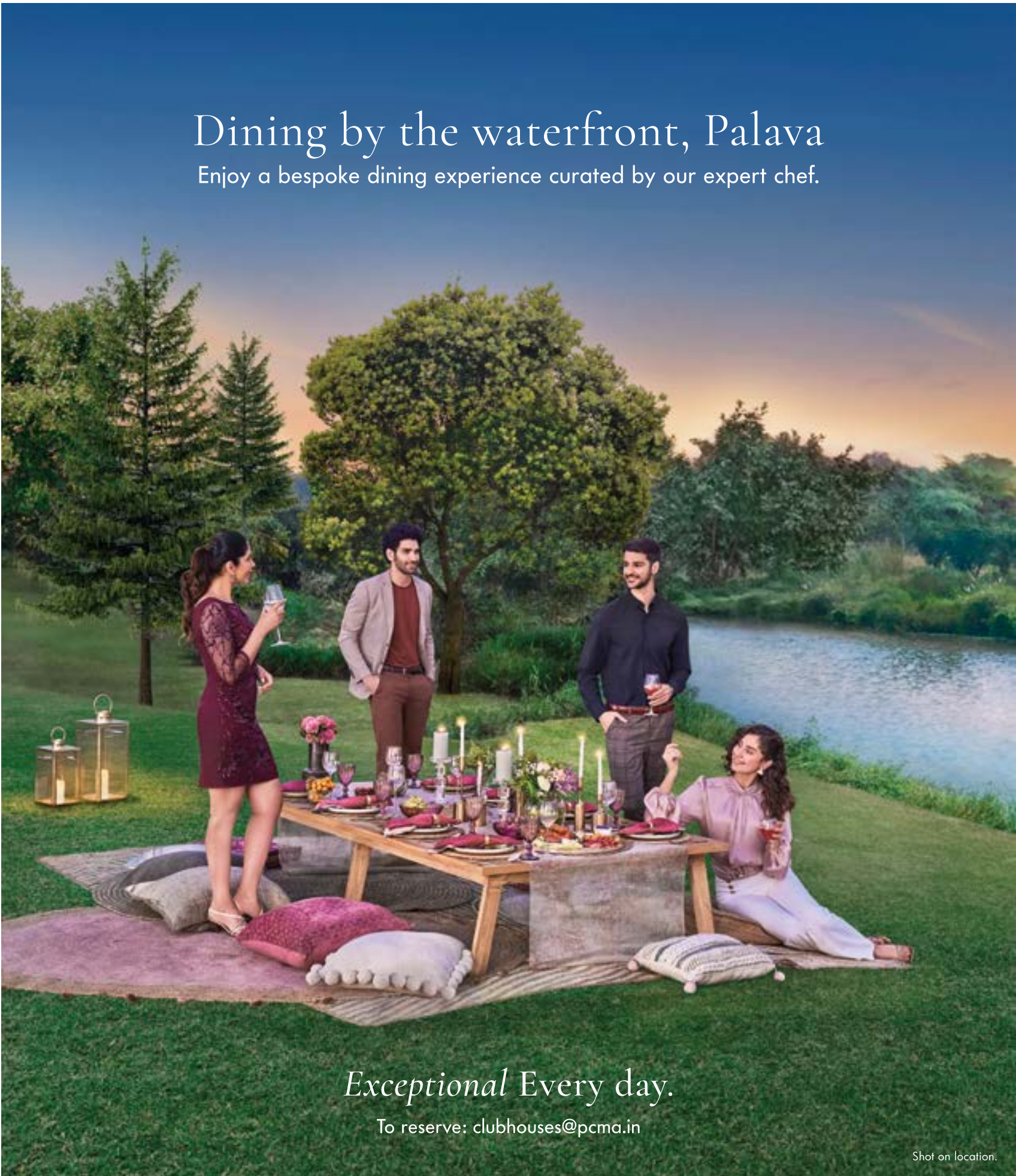
Hrit Roy, captures the vibrant, expansive park by a tranquil waterbody, where residents unwind, spend time with children or take peaceful strolls.



Enchanting festive lights at Palava, captured by a resident of Lakeshore Greens, Prasanna Sutar.

Dining by the waterfront, Palava

Enjoy a bespoke dining experience curated by our expert chef.



Exceptional Every day.

To reserve: clubhouses@pcma.in

Shot on location.